



**EXPERIENCE THE  
FUTURE OF FIBER LASER  
TECHNOLOGY**



**One Stop  
Solution**



**Quality  
Control**

## **TECHNO LASER ENGINEERING**

Deal In : Fiber Laser Cutting Machine, Fiber Laser Welding Machine, Fiber Laser Marking Machine, Co2 Laser Cutting Machine  
Fiber Laser Marking Machine, CNC Wood Router Machine, CNC Press Brake, Jewellery Laser Machine, All Machine Accessories

# ABOUT TECHNO LASER ENGINEERING

Techno Laser Engineering, established in 2023, has emerged as a leader in the Manufacturing and exporting of advanced Laser Cutting Machines. Our extensive product line features state-of-the-art Laser Engraving-Machines, Laser Cutting Machines, and CNC Routers, all crafted from high-grade components and adhering to industry norms and standards.

In 2023, we expanded our operations by starting our own manufacturing plant in Ahmedabad, Gujarat. This facility focuses on the production of Fiber Laser Cutting Machines, CNC Routers, and CO2 Laser Cutting Machines, further enhancing our capability to deliver high-quality products directly to our customers.

We have constructed a highly advanced and well-equipped infrastructure unit. Our manufacturing unit is equipped with all the required products and tools. For the streamlined execution of our business operations, we have separated this infrastructure unit into various functional divisions such as warehousing and R&D. This allows us to deliver products on time and safely to our clients, supported by a well-connected distribution network. Our machines are celebrated for their ease of use, superior performance, robust construction, best-quality design, and exceptional longevity. These qualities have garnered us widespread admiration and trust among our customers.

Under the direction of our mentors, Mr Anil Sharma, and Mrs Soni Sharma we have achieved commendable success in the market. Their vast experience and profound knowledge have been instrumental in expanding our reach across the nation.



## OUR TEAM

We are backed by a talented team of professionals that makes every possible effort to meet the high expectations of our valued clients. They make sure that all the offered machines are in compliance with industry standards of quality and then dispatch at the customers end within the committed time frame.

# Techno

---

## Laser Engineering



## | Why Us?

With years of experience in this industry, we know what our customers are looking for. There are a lot of reasons that gives us a competitive edge over the other organization. Our offered machines are highly admired by the customers for their high performance and excellent finishing standards.



COST **EFFECTIVE**  
BEST **SELLING**  
EASY **OPERATION**



MODEL	TLE-1530H	TLE-2040H
Cutting	1550 X 3050 mm	2050 x 4050 mm
Laser Power	1000W - 6000W	1000W - 6000W
Linkage Speed	120M / MIN	120M / MIN
Acceleration	1.5 G	1.5 G
Positional Accuracy	± 0.03 mm	± 0.03 mm
Re-Positional Accuracy	± 0.02 mm	± 0.02 mm

### CUTTING SAMPLE

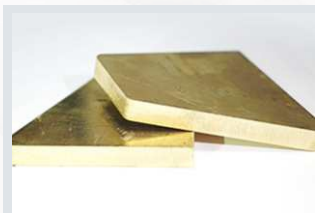






MODEL	TLE-2065H	TLE-2565H	TLE-3012H
Cutting	2050 x 6550 mm	2550 x 6550 mm	3000 X 12000 mm
Laser Power	1500W - 20000W	3000W - 20000W	3000W - 30000W
Linkage Speed	120M / MIN	120M / MIN	100M / MIN
Acceleration	1.5G	1.5G	1.5G
Positional Accuracy	± 0.03 mm	± 0.03 mm	± 0.03 mm
Re-Positional Accuracy	± 0.02 mm	± 0.02 mm	± 0.02 mm

### CUTTING SAMPLE

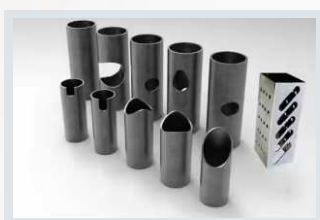


EASY **OPERATION**  
EASY **MAINTENANCE**  
EASY **LOADING PLATES**



MODEL	TLE-1530HT	TLE-2040HT	TLE-2065HT
Sheet Cutting Range	1550 X 3050mm	2050 x 4050mm	2050 x 6550mm
Tube Cutting Dia.	Ø 20 - 220mm	Ø 20 - 220mm	Ø 20 - 220mm
Tube Cutting Length	6 Meter / 3 Meter	6 Meter	6 Meter
Acceleration	1.0 G	1.0 G	1.0 G
Positional Accuracy	± 0.03 mm	± 0.03 mm	± 0.03 mm
Re-Positional Accuracy	± 0.02 mm	± 0.02 mm	± 0.02 mm
Laser Power	1500W -6000W	1500W -12000W	1500W -12000W

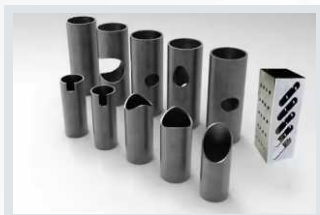
### CUTTING SAMPLE





MODEL	TLE-6000T
Cutting Diameter	Ø 20 - 220mm
Laser Power	1500W - 6000W
Max Rotating Speed	100-150r/ Min
Acceleration	1.0 G
Positional Accuracy	± 0.03 mm
20mm square hole symmetric Deviation	0.05 mm
Minimum Tube Tail Length	80 mm
Loading Capacity	200 Kg, 30 Kg/m

### CUTTING SAMPLE





EASY **OPERATION**

EASY **MAINTENANCE**

EASY **LOADING PLATES**



MODEL	TLE-1532E	TLE-2040E	TLE-2565E
Cutting Range	1550 X 3250mm	2050 x 4050mm	2550 x 6550mm
Laser Power	1500W - 20000W	1500W - 20000W	3000W - 20000W
Linkage Speed	120M / MIN	120M / MIN	120M / MIN
Acceleration	1.5G / 3G	1.5G / 3G	1.5G / 3G
Positional Accuracy	± 0.03 mm	± 0.03 mm	± 0.03 mm
Re-Positional Accuracy	± 0.02 mm	± 0.02 mm	± 0.02 mm
Pallet Exchange Time	15 S	25 S	35 S

### CUTTING SAMPLE



EASY **OPERATION**

EASY **MAINTENANCE**

EASY **LOADING PLATES**



MODEL	TLE-1530CE	TLE-2040CE	TLE-2565CE
Cutting Range	1550 X 3050mm	2050 x 4050mm	2550 x 6550mm
Laser Power	1500W - 20000W	1500W - 20000W	1500W - 20000W
Linkage Speed	120M / MIN	120M / MIN	120M / MIN
Acceleration	1.5G / 3G	1.5G / 3G	1.5G / 3G
Positional Accuracy	± 0.03 mm	± 0.03 mm	± 0.03 mm
Re-Positional Accuracy	± 0.02 mm	± 0.02 mm	± 0.02 mm
Pallet Exchange Time	15 S	25 S	35 S

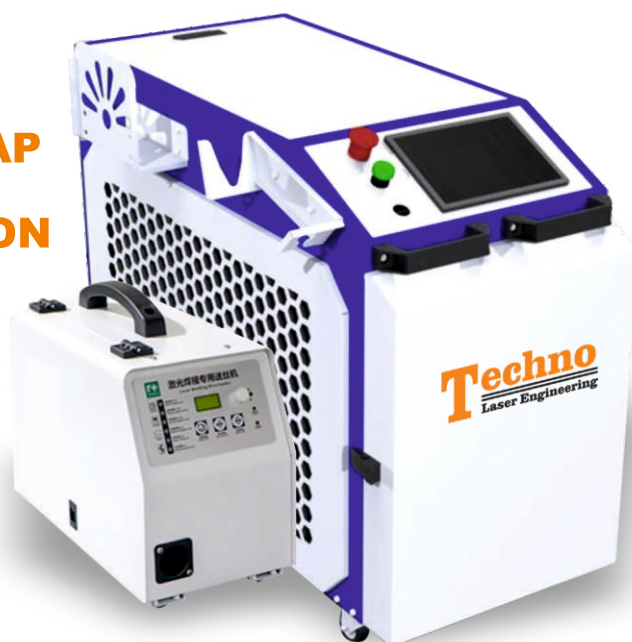
### CUTTING SAMPLE



*Easy* **OPERATION**

*Zero* **WELDING GAP**

*No* **DEFORMATION**



MODEL	1500W	2000W	3000W
Conduction type	fiber laser		
Laser Frequency (KHZ)	50-20000 KHZ		
Cooling Method	Water Chiller		
Total power	7.5 KW (including water chiller)	8.5 KW (including water chiller)	11KW (including water chiller)
Fiber cable length	10 m		
Electricity requirements	Single phase 220 v $\pm$ 10% 50/60 hz AC	Single phase 220 v $\pm$ 10% 50/60 hz AC	Three phases 380 v $\pm$ 10 percent 50/60 hz AC
Welding mode	Point mode or circular mode		
Filler wire dia	0.5 TO 1.6 mm		
Dual Wire Feeder	Available	Available	Available

### CUTTING SAMPLE







Name		Unit	Parameter
Capacity		Ton	220
Pressing Force		kN	2200
Working Length		mm	3200
Distance between Uprights		mm	2700
Depth of Throat		mm	400
Ram Travel		mm	200
Worktable Height		mm	880
Numerical Control System		Netherlands Delem	
Controlling Axis		Y <sub>1</sub> , Y <sub>2</sub> , X <sub>1</sub> , (R) , +W	
Capacity of tank		L	500
Main Motor Power		Main Motor Power	
Backgauge X Axis	Route	mm	600
	Speed	mm / s	200
	Positional	mm	±0.05
Backgauge R Axis / NA	Route	mm	200
	Speed	mm / s	200
	Positional	mm	±0.05
Overall Dimensions	Length	mm	3800 (Except the front arm)
	Width	mm	1900(Except the Carrier Aircraft)
	Height	mm	2800 (The Slider in the highest position)

## TLE-6090 CNC



### TECHNICAL PARAMETER

Working Area	600 X 900 X 150mm (X-Y-Z)
Control system	NK105 G2
Spindle	2.2kw Air / Water Cooled
Spindle Speed	18000 / 24000 RPM
Machine Body And Gantry	Heavy Duty Metal Welding
Table	T Slot Table
Driving system	Stepper Motor / Hybrid Servo Motor & Driver
X, Y, Z Axis Structure	High Precision Ball Screw
X Y Z Axis Square Rails	XYZ Axis Taiwan Linear Square Guide
Collets Type	Er20 3.175-12.7m
Max. speed	18m/min
Max. working speed	12m/min
Command	G code
Machine Voltage	AC 220V/AC,50-60hz
Machine Weight	300kg (Approx)
Machine Software	Artcam

## TLE-1325 / 1530 CNC



### TECHNICAL PARAMETER

Working Area	1300 X 2500 X 200 MM / 1500 X 3000 X 200 MM
Control system	NK 105G2 ( Optional : DSP Hand Controller )
Spindle	3 KW / 4.5 KW / 6 KW
Spindle Speed	18000 / 24000 RPM
Machine Body And Gantry	Heavy Duty Metal Welded Structure
Table	T Slot / PVC Table
Driving system	Stepper Motor / Hybrid Servo Motor & Driver
Rack & Pinion	Helical Rack & Pinion
X Y Z Axis Square Rails	XYZ Axis Taiwan Hiwin Linear Square Guide
Collets Type	Er20 3.175-12.7m
Max. speed	18m/min
Max. working speed	12m/min
Command	G code
Machine Voltage	AC 380 V / 3 Phase, 50 Hz
Machine Weight	1200 Kg
Machine Software	Artcam
Machine Dimensions	3000 x 2200 x 1900 mm
Lubrication System	Auto Oil Lubrication

## TLE-1325 WOOD / STONE CNC



### TECHNICAL PARAMETER

Working Area	1300 X 2500 X 250 MM / 1500 X 3000 X 250 MM
Control system	NK 105G3 Controlling System
Spindle	4.5 KW / 6 KW / 7 KW Water Cooling Spindle
Spindle Speed	0-24000 RPM
Machine Body And Gantry	Heavy Duty Metal Welded Structure
Table	Aluminum T Slot & PVC Table
Driving system	Stepper Motor/Hybrid Servo Motor & Driver/Pure Servo Motor
Rack & Pinion	Helical Rack & Pinion
X Y Z Axis Square Rails	XYZ Axis 25mm Taiwan Hiwin Linear Square Guide
Collets Type	ER 32
Max. speed	0-20000mm/min
Max. working speed	0-10000mm/min
Water Bed	5mm SS Tank
Machine Voltage	AC 380 V / 3 Phase, 50 Hz
Machine Weight	1200 Kg
Machine Software	Artcam
Machine Dimensions	3500 x 2250 x 2130 mm
Lubrication System	Auto Oil Lubrication



## APPLICATION AREA

### MATERIALS USEABLE IN CNC MACHINES

Brass  
Aluminum  
Aluminum Composite Panel  
Acrylic  
Wood  
Synthetic Stones (Artificial Marbles)  
Plastic  
Backlit Hylam  
MDF  
Foam Board  
Sandwich Plastic Sheet

### APPLICATIONS USED IN INDUSTRIES

Wooden 2d & 3d engraving works  
Wooden Door Manufacturing  
Wooden Modular Furniture Manufacturer  
Wooden Carving  
Wooden Handicraft  
Wooden Clock Manufacturing  
Plywood Manufacturing  
Wooden Temple Manufacturer  
Acrylic Signage Industries  
Acrylic Letter Cutting Work  
ACP Cutting Works  
Interior Design Industry / Architecture Model Work

### OPTIONAL ITEMS

Stone Industry  
Ceramic Industry  
Art relief  
Stone Tablets Processing  
Decoration Processing  
Marble Industry  
Blue Stone  
Granite Name Plate  
Carving Industry  
Temple CNC Stone Work

## MACHINE CUTTING SAMPLES





Marking Logo, Serial Number, Batch Number, Barcode or any text



Brass



Electric Switch



Rotary Marking



Pen



- Electrical Components
- Telecom Parts
- Aviation Parts
- Surgical Equipments
- Auto Components
- Hardware & Sanitaryware

Model	TLE - 20	TLE - 30
Laser Power	20W	30W
Laser Wavelength	1064nm	1064nm
Linear Speed	7000mm	7000mm
Laser Frequency	20-80KHZ	20-80KHZ
Marking Size	70-300mm	70-300mm
Minimum Line Width	0.01mm	0.01mm
Repeated Accuracy	+0.003mm	+0.003mm
File Format Support	AI, PLT, DXF, BMP	
Cooling Type	Air Cooled	



Golden Ply

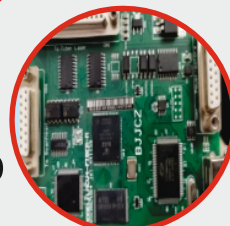


Mdf Marking



RAYCUS  
SOURCE

ORIGINAL  
JCZ CARD



# LASER WELDING MACHINE



## SPECIFICATIONS

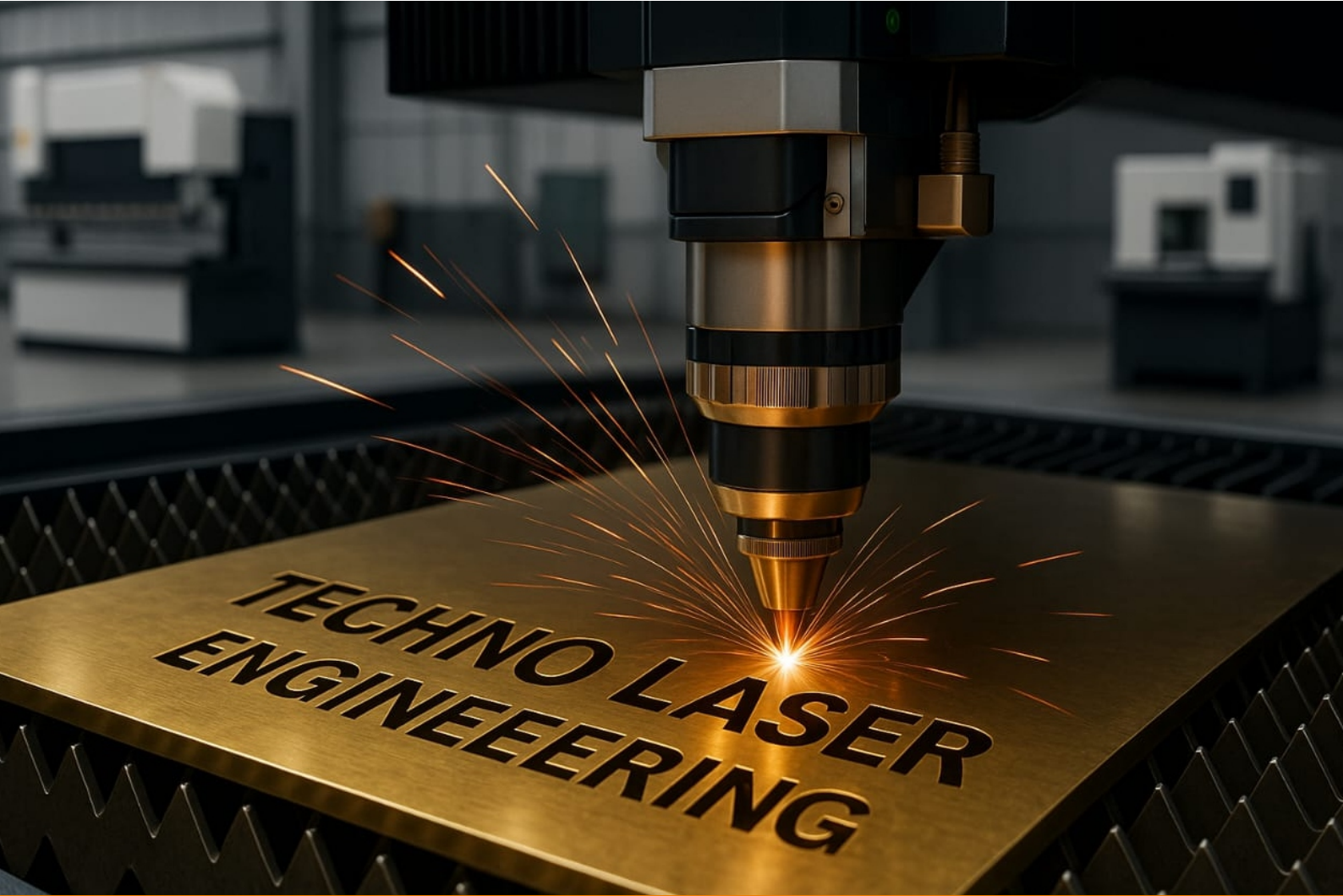
OUTPUT POWER	100 W / 200 W / 300 W - BASED ON REQUIREMENT
SINGLE-PULSE ENERGY	0-100 J
MACHINE DESIGN TYPE	DESKTOP / VERTICAL
LASER SOURCE	ND:YAG
LASER WAVELENGTH	1064 NM
PUMP LAMP	PULSED XENON LAMP
PULSE WIDTH	0.1-15 MS ADJUSTABLE
PULSE REPEATED FREQUENCY	1~20 HZ ADJUSTABLE
WELDING SPOT DIAMETER	0.2-1.5 MM ADJUSTABLE
OBSERVING SYSTEM	MICROSCOPE / CCD - BASED ON REQUIREMENT
COOLING SYSTEM	WATER CHILLER
POWER SUPPLY	SINGLE PHASE AC 220V $\pm$ 10%, 50HZ / 60HZ, 4 KW
RUNNING ENVIRONMENT	TEMPERATURE 5°C-28°C HUMIDITY 5%-70%

## MATERIAL RANGE

Stainless steel, Galvanize sheets, gold, silver, Mild steel, brass, copper, platinum, Aluminum etc.

## APPLICATIONS





# **Techno**

---

---

## **Laser Engineering**

**TECHNO LASER ENGINEERING**

### **Corporate Office**

1st Floor, Plot No. 3, Kh. No. 33/6, Ranaji Enclave,  
Najafgarh, New Delhi-110043



(M) +91 9758902411, 9911363491, 80761 02275

E-mail : [technolaserengineering10@gmail.com](mailto:technolaserengineering10@gmail.com), [soni@technolaserengineering.com](mailto:soni@technolaserengineering.com),  
[sales@technolaserengineering.com](mailto:sales@technolaserengineering.com), [service@technolaserengineering.com](mailto:service@technolaserengineering.com),  
[office@technolaserengineering.com](mailto:office@technolaserengineering.com) | Website : [www.technolaserengineering.com](http://www.technolaserengineering.com)